

Museums at Night

By Sarah Gudgeon

1. Read

Museums are unique places; they are home to history, art, culture and technology. The network of museums in the UK is extensive and impressive but curators sometimes struggle to attract new visitors. At times people consider museums as quiet, boring places where people wander around for hours on their own rather than a place to spend a fun Saturday afternoon... or an evening. Yes, that's right, the evening. Venues around the UK now take part in the Museums at Night Festival twice a year in May and October. This festival is an opportunity for museums, galleries and heritage sites to draw in new visitors and supporters and gives the general public the chance to see what's on offer.

This year's events include TorchLit Stories at the Palace Green Library in Durham as well as a lecture on human skeletal remains at the Benjamin Franklin House in the capital. You can even go to Pumpkin Day at the Visual Arts Centre in Scunthorpe, and if you're feeling really brave, why not go on a guided ghost walk?



All of this extra activity means that the British culture and heritage sector receives more media coverage than usual and this can only be a good thing. Support your museums, get together with some friends and go to at least one event if you can.

2. Write true or false.

- a. Museums are places of history, art, culture and technology.
- b. It is sometimes difficult to attract new visitors.
- c. All museums participate in the Museums at Night Festival
- d. The general public organise the events.
- e. One of the events organised in London this year is a talk on skeletal remains.
- f. Newspapers write about the festival events

3. Choose a local museum/gallery/heritage site. Create an event to submit to the Museums at Night festival. Use event information available on this site to help you
www.museumsatnight.org.uk.

Include

Event name:

Date:

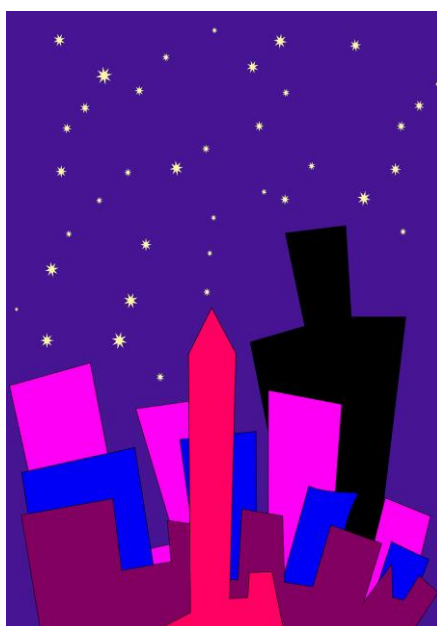
Time:

Event description:

Ages suitable for:

Price:

Venue address:



Teacher's Notes

1. Warmer: mini class discussion on famous museums (international, national and local). Ask students to talk about which ones are their favourites and why, how often they go, what kinds of exhibitions/events they would like to see organised.

2. Write true or false: a. false b. false c. true d. false e. true f. false